



HAL
open science

Characterisazion of bifid, fibrous and fine zygomaticus muscles with ultrasound elastography

R. Ternifi, P. Pouletaut, F. Charleux, Stéphanie Dakpé, Sylvie Testelin, Bernard Devauchelle, Salem Boussida, Jean-Marc Constans, S. Bensamoun

► To cite this version:

R. Ternifi, P. Pouletaut, F. Charleux, Stéphanie Dakpé, Sylvie Testelin, et al.. Characterisazion of bifid, fibrous and fine zygomaticus muscles with ultrasound elastography. 45ème congrès de la Société de Biomécanique, Société de Biomécanique, Oct 2020, Metz, France. hal-02886069

HAL Id: hal-02886069

<https://hal.utc.fr/hal-02886069>

Submitted on 1 Jul 2020

HAL is a multi-disciplinary open access archive for the deposit and dissemination of scientific research documents, whether they are published or not. The documents may come from teaching and research institutions in France or abroad, or from public or private research centers.

L'archive ouverte pluridisciplinaire **HAL**, est destinée au dépôt et à la diffusion de documents scientifiques de niveau recherche, publiés ou non, émanant des établissements d'enseignement et de recherche français ou étrangers, des laboratoires publics ou privés.

Characterization of bifid, fibrous and fine zygomaticus muscles with ultrasound elastography

R. Ternifi^a, P. Pouletaut^a, F. Charleux^c, S. Dakpé^b, S. Testelin^b, B. Devauchelle^b, S. Boussida^d, J.M. Constans^d, S.F. Bensamoun^{a*}

^aAlliance Sorbonne Universités, Université de Technologie de Compiègne, Biomechanics and Bioengineering Laboratory, UMR CNRS 7338, Compiègne, France;

^bMaxillofacial surgery department, CHU Amiens, France; Institut Faire Faces, Amiens, France; EA 7516 Chimère, University of Picardie Jules Verne, Amiens, France;

^cACRIM-Polyclinique Saint Côme, Medical Radiology, Compiègne, France;

^dImaging and Medical Radiology, EA 7516 CHIMERE, University of Picardie Jules Verne, CHU Amiens, France

Keywords: facial muscle; major zygomaticus; morphology; muscle elasticity; shear wave elastography.

1. Introduction

Facial expression, such as the smile, is expressed by the zygomaticus muscle (ZM). In case of facial paralysis, toxin injections are performed inside this muscle on the non-paralyzed side to restore the patient's expression. The anatomic composition of the facial muscle, and more specifically for the zygomaticus, has been determined through muscle dissection (Pessa et al. 1998). A non invasive way allows to record the anatomical properties of the facial muscle is to use ultrasound (US). Alfen et al. (2003) performed US test for the main facial group of muscles and it has been demonstrated the feasibility and the reproducibility to measure the muscle thickness and the echo intensity with ultrasound technique.

The knowledge of the morphological properties (diameter of the fascicle, presence of collagenous tissue, etc...) will allow a better understanding of the facial muscle structure (McComas et al. 1998) with the possibility to correlate this information to mechanical properties. The novelty of this study is to discriminate the characteristics of bifid, fibrous and fine zygomaticus muscles with US elastography.

2. Methods

2.1 Participants

31 healthy volunteers (16 women, 15 men, age range: 20 to 29, mean age: 24.8 ± 3.2 years) with no facial muscle damage underwent an ultrasound test. This study was approved by the CPP SUD-EST IV.

2.2 Ultrasound acquisition

The zygomaticus muscle is a cheek muscle starting from the malar bone and moving downwards to be inserted in the corner of the lips (McComas et al. 1998). The subjects laid on their sides in a relaxed, reclined position with pillows under their heads. B-

mode images were recorded with the Aixplorer MultiwaveTM System (Supersonic Imagine, Aix-en-Provence, France) with the same protocol and setting parameters as previously published (Ternifi et al. 2019). Briefly, the SuperLinearTM SLH20-6 transducer was used to visualize the ZM. The spatial resolution is 38 μ m, the bandwidth 6-20 MHz, the footprint 2.38 cm with 192 elements in phased array. The average (SD) muscle thickness (MT) was manually measured in the belly part of ZM (Figure 1A).

2.3 Shear Wave Elastography (SWE)

In parallel to morphological analysis, ZM elasticity (Figure 1B) was visualized with SWE acquisition. A circular region of interest (ROI) was manually placed in the same belly area where the thickness measurement was made. The diameter of the ROI (from 1 to 3 mm) was adjusted in function of the thickness of the ZM. The mean, minimum, maximum, and standard deviation of ZM elasticity were automatically calculated and displayed from the ROI.

3. Results and discussion

The use of high frequency SLH 20-6 probe provide a clear B-mode representation of superficial and thin muscle (Kammoun et al. 2019). Among the healthy cohort, an anatomical classification of the ZM has been performed based on the morphology and the echo intensity of the ZM. The results of the classification revealed four ZM groups defined as :

1) a *normal structure* (Figure 1A) represented by hypoechoic zones compared to those of subcutaneous fat tissue. This anatomic structure represents 50% of the cohort.

The following ZM structures are less present in healthy subjects compared to patients. Thus, a limitation of the study is the small sample size of the cohort for these categories.

2) a *bifid structure* (Figure 1B) showing a collagenous

separation inside the ZM muscle. This shape was in agreement with the literature (Hu et al. 2008).

3) a *fibrous structure* (Figure 1C) composed of hyperechoic regions which corresponds to fibrous or fatty tissues.

4) a *thin structure* (Figure 1D) defined by a muscle thickness lower to 1.5 mm.

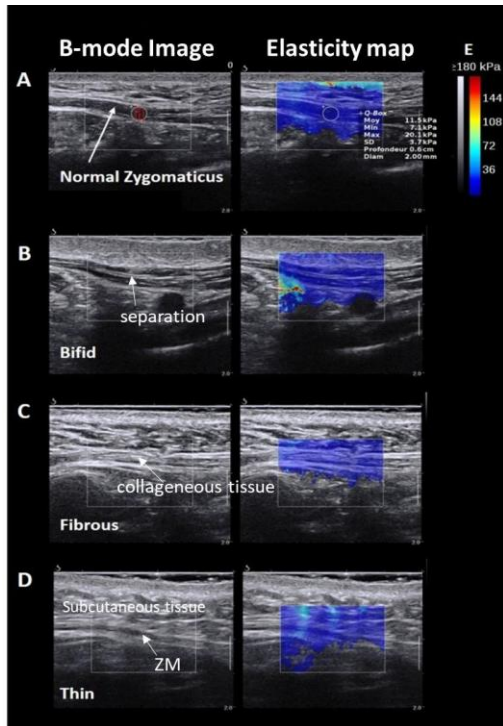


Figure 1. B-mode images and elasticity maps of zygomaticus muscle classified in four groups (A: normal, B: bifid, C: fibrous and D: thin).

The color elastogram shows an homogeneous blue color, indicating no muscle contraction. The bifid ZM is significantly thicker compared to the normal group ($p = 0.014$, two-sample Kolmogorov-Smirnov test), and the fibrous ZM is slightly thicker than the normal one (Table 1). As expected the thin structure is significantly lower compared to the normal, bifid and fibrous ZM.

Group	Young's modulus (kPa)				Thickness (cm)	
	Mean	SD	Min	Max	Mean	SD
Normal (n = 15)	16.7	1.7	13.1	20.9	0.19	0.03
Bifid (n = 7)	16.5	1.6	11.9	23.8	0.25	0.05
Fibrous (n = 9)	20.6	1.5	15.3	25.7	0.22	0.04
Thin (n = 8)	15.8	1.4	13.3	17.6	0.09	0.01

Table 1. Muscle thickness (MT) and Young's modulus (E) of the different ZM structures.

The elasticity of the fibrous ZM is significantly higher (about 4 kPa) compared to the other structures ($p < 0.004$, KS-test). However, the cartography is not enough sensitive to highlight this changes. In addition, the relevance of the elasticity for the bifid and fibrous muscles must be considered. Indeed, these structures provide a non linear and anisotropic medium which is not in line with elastography assumptions. While numerous muscle studies in MR and US elastography field have allowed this hypothesis as a first approximation, the high anisotropic behaviour of the fibrous and bifid tissues needs to be taken into account for the comparison of their elastic properties.

4. Conclusions

The originality was to accurately characterize the bifid, fibrous and fine structures of the ZM and to show the feasibility to measure the elasticity of these different structures. The knowledge of the ZM patterns and the mechanical behaviors could help clinicians for facial rehabilitation of patients. However, the limitations of the method must be overcome for facial paralysis characterization

Acknowledgements

FEDER - Hauts de France Region - Equipex Figures.

References

Alfen NV, Gilhuis HJ, Keijzers JP, Pillen S, Dijk JP. 2013. Quantitative facial muscle ultrasound: Feasibility and reproducibility. *Muscle & Nerve*. 48(3):375–380.

Kammoun M, Ternifi R, Dupres V, Pouletaut P, Mème S, Mème W, Szeremeta F, Landoulsi J, Constans J-M, Lafont F, et al. 2019. Development of a novel multiphysical approach for the characterization of mechanical properties of musculotendinous tissues. *Sci Rep*. 9(1):1–12.

McComas AJ. 1998. Oro-facial muscles: internal structure, function and ageing. *Gerodontology*. 15(1):3–14.

Pessa J. E., Zadoo VP, Adrian EK, Yuan CH, Aydelotte J, Garza JR. 1998. Variability of the midfacial muscles: analysis of 50 hemifacial cadaver dissections. *Plast Reconstr Surg*. 102(6):1888–1893.

Ternifi R, Pouletaut P, Dakpé S, Testelin S, Devauchelle B, Charleux F, Constans J-M, Bensamoun SF. 2019. First Evaluation of Zygomaticus Major Muscle Elastic Properties Using a US Elastography Technique. *Journal of Biomedical Science and Engineering*. 12(11):459–468.