

## Development of MR Elastography method to characterize the elastic property of the sterno-cleido-mastoid (SCM) muscle

P. Pouletaut, F. Charleux, B. Devauchelle, J.-M. Constans, R. Ternifi, S  
Boussida, A Hamaoui, C Krzisch, S. Bensamoun

### ► To cite this version:

P. Pouletaut, F. Charleux, B. Devauchelle, J.-M. Constans, R. Ternifi, et al.. Development of MR Elastography method to characterize the elastic property of the sterno-cleido-mastoid (SCM) muscle. 45ème congrès de la Société de Biomécanique, Société de Biomécanique, Oct 2020, Metz, France. hal-02886044

**HAL Id: hal-02886044**

**<https://hal.utc.fr/hal-02886044>**

Submitted on 1 Jul 2020

**HAL** is a multi-disciplinary open access archive for the deposit and dissemination of scientific research documents, whether they are published or not. The documents may come from teaching and research institutions in France or abroad, or from public or private research centers.

L'archive ouverte pluridisciplinaire **HAL**, est destinée au dépôt et à la diffusion de documents scientifiques de niveau recherche, publiés ou non, émanant des établissements d'enseignement et de recherche français ou étrangers, des laboratoires publics ou privés.

# Development of MR Elastography method to characterize the elastic property of the sterno-cleido-mastoid (SCM) muscle

P. Pouletaut<sup>a</sup>, F. Charleux<sup>b</sup>, B. Devauchelle<sup>c</sup>, J.M. Constans<sup>c,d</sup>, R. Ternifi<sup>a</sup>, S. Boussida<sup>d</sup>, A. Hamaoui<sup>e</sup>, C. Krzisch<sup>e</sup>, S.F. Bensamoun<sup>a\*</sup>

<sup>a</sup>Alliance Sorbonne Universités, Université de Technologie de Compiègne, Biomechanics and Bioengineering Laboratory, UMR CNRS 7338, Compiègne, France;

<sup>b</sup>ACRIM-Polyclinique Saint Côme, Medical Radiology, Compiègne, France;

<sup>c</sup>Facing Faces Institute, Department of Maxillofacial Surgery, Amiens University Medical Center, Amiens, France;

<sup>d</sup>Imaging and Medical Radiology, EA 7516 CHIMERE, University of Picardie Jules Verne, CHU Amiens, France;

<sup>e</sup>Radiotherapy Oncology Department, CHU Amiens, France

**Keywords:** Head and neck cancers; sterno-cleido-mastoid muscle; muscle elasticity; Magnetic Resonance Elastography.

## 1. Introduction

Radiotherapy applied to head and neck cancers causes fibrosis that is a very frequent side effect of this treatment. Fibrosis provides an increase of muscle stiffness, responsible for an impairment in the quality of life of patients (Langendijk et al. 2008), and can obstruct a possible catch-up surgery or a possible re-irradiation (Moloney et al. 2015). The appreciation of radiation-induced cervical fibrosis within the sterno-cleido-mastoid (SCM) muscle is subjective and radiotherapists have attempted to define standardized clinical measurement scales, which bring several objective criteria such as the level of indurations of cutaneous tissues and the quality of life. The correlation between these different classifications is often poor (Davis et al. 2003). Thus, the purpose of this study is to develop MR Elastography (MRE) protocol for healthy neck muscle to latterly used for patient having neck muscle fibrosis.

## 2. Methods

### 2.1 Participants

Five volunteers, without muscle abnormality and no history of muscle disease underwent a MRI neck acquisition. This study was approved by the Institutional Review Board (CPP IDF6).

### 2.2 Localization of the sterno-cleido-mastoid muscle

The subject lays supine inside the 3T MRI Philips machine (GIE Faire-Faces) and a head coil was used inducing a stable position of the neck without tension. The sterno-cleido-mastoid (SCM) muscle is a neck muscle with two points of insertion in the upper (bony point behind the ear, occipital bone at the posterior and lower part of the skull) and lower (sternum, collarbone) sides of the neck.

Accurate anatomical localization of the SCM has been performed with a coronal 3D T1 sequence (coronal plane, figure 1A; sagittal plane figure 1B).

The slice thickness was 2 mm and the pixel size 0.65 x 0.65 mm<sup>2</sup>.

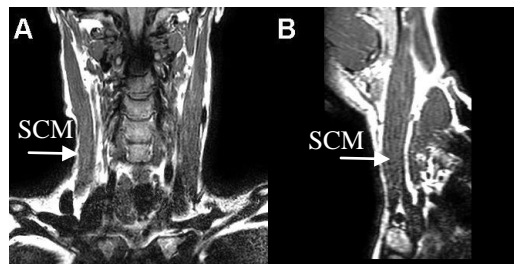


Figure 1. SCM in coronal (A) and sagittal (B) planes.

### 2.3 Development of pneumatic drivers

In the literature, fibrosis has been quantified in pathological muscle (Bensamoun et al. 2015). This quantification was realized with Magnetic Resonance Elastography (MRE) technique which is combined with specific pneumatic drivers such as a silicone tube driver (Chakouch et al. 2015) wrapped around the thigh. The role of the driver is to generate a non-invasive vibration at the surface of the tissue. In the present study, three pneumatic drivers were developed: a tie shape placed around the neck, a rectangular bar in contact with the lower part of the SCM and a square cushion driver, made of memory foam, placed above the collarbone.

### 2.4 Magnetic Resonance Elastography (MRE)

MRE is an imaging technique based on the propagation of shear waves in soft tissue allowing the quantification of mechanical properties. To follow the displacement of the waves, the motion encoding gradients in the three orthogonal directions have been performed with four time offsets. Subsequently, the waves have been generated with three different frequencies (60 Hz, 90 Hz, 120 Hz) for each pneumatic drivers in order to select the best wave propagation in the SCM. Moreover, different wave amplitudes (from 50 to 100 %) have been tested to make the wave deeply penetrate the muscle.

Phase images were collected with a gradient-echo sequence (flip angle:20°; field of view: 24 cm; acquisition matrix: 256x256; TR/TE = 50.0/20.3, 55.5/14.1 and 58.3/11.3 ms at 60 Hz, 90 Hz and 120 Hz, respectively). The acquisition times per direction were 59 s, 54 s and 56 s at 60 Hz, 90 Hz and 120 Hz, respectively. Image processing has been performed with a directional filtering (Manduca et al. 2003) to limit the effects of interferences and cartography of elasticity has been obtained with inversion algorithm (Manduca et al. 2001).

### 3. Results and discussion

Figure 2A showed shear waves in the SCM muscle and the associated cartography of shear modulus ( $\mu$ ) (Figure 2B). This result has been obtained with the square cushion driver, a frequency of 90 Hz, an amplitude of 90 % and a motion encoding applied in the anterior-posterior direction. These parameters associated to the cushion driver allow to consistently visualize the propagation of the waves in the SCM. However, figure 2B shows a heterogeneous cartography with a red spot revealing an irregular propagation of the waves due to experimental problems. The next step will be to obtain a better propagation with consistent wavelength along the SCM. The variation of wavelength induced a high (7.91 kPa) standard deviation. The average shear modulus (7.76 kPa) in the region of interest, represented by white border line, is in agreement with other studies which have performed shear wave elastography on SCM (Ewertsen et al 2018, Liu et al 2015) but must be confirmed with additional MRE tests. These results (phase image, elasticity) show the feasibility of this MRE protocol to quantify the mechanical properties of SCM muscle.

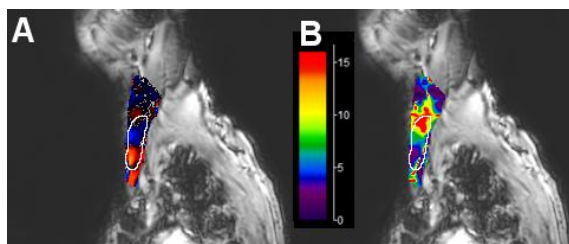


Figure 2. Phase image (A) and elastic shear modulus ( $\mu=E/3$ ) image in kPa (B) in the region of interest of SCM represented by white border line.

This MRE protocol will be further improved by adjusting the placement of the driver in a reproducible way. The next step will be to apply this protocol for patient having neck muscle fibrosis after radiotherapy, and to correlate quantitative measurements (elasticity, viscosity) to the subjective results obtained with functional and clinical scales, in patients with different stages of fibrosis.

### 4. Conclusions

There is currently a significant lack of studies on the treatment of complications and side effects of radiotherapy. The present protocol could bring a decisive element (benefit / risk ratio) to better guide the patients for surgical treatment and/or reirradiation.

### Acknowledgements

This work was supported by FEDER - Hauts de France Region (#PI0009535) and Equipex Figures. We thank the Mayo Clinic (Dr Ehman) for its technical support.

### References

- Bensamoun SF, Charleux F, Debernard L, Themar-Noel C, Voit T. 2015. Elastic properties of skeletal muscle and subcutaneous tissues in Duchenne muscular dystrophy by magnetic resonance elastography: A feasibility study. *IRBM*. 36(1):4–9.
- Chakouch MK, Charleux F, Bensamoun SF. 2015. Quantifying the Elastic Property of Nine Thigh Muscles Using Magnetic Resonance Elastography. *PLOS ONE*. 10(9):e0138873.
- Davis AM, Dische S, Gerber L, Saunders M, Leung SF, O’Sullivan B. 2003. Measuring postirradiation subcutaneous soft-tissue fibrosis: state-of-the-art and future directions. *Seminars in Radiation Oncology*. 13(3):203–213.
- Ewertsen C, Carlsen J, Perveez MA, Schytz H. 2018. Reference values for shear wave elastography of neck and shoulder muscles in healthy individuals. *Ultrasound international open*. 4(01):E23–E29.
- Langendijk JA, Doornaert P, Verdonck-de Leeuw IM, Leemans CR et al. 2008. Impact of late treatment-related toxicity on quality of life among patients with head and neck cancer treated with radiotherapy. *J Clin Oncol*. 26(22):3770–3776.
- Liu KH, Bhatia K, Chu W, He LT, Leung SF, Ahuja AT. 2015. Shear Wave Elastography-A new quantitative assessment of post-irradiation neck fibrosis. *Ultraschall Med*. 36(4):348–354.
- Manduca A, Lake DS, Kruse SA, Ehman RL. 2003. Spatio-temporal directional filtering for improved inversion of MR elastography images. *Medical Image Analysis*. 7(4):465–473.
- Manduca A, Oliphant TE, Dresner MA, Mahowald JL, Kruse SA et al. 2001. Magnetic resonance elastography: Non-invasive mapping of tissue elasticity. *Medical Image Analysis*. 5:237–254.
- Moloney EC, Brunner M, Alexander AJ, Clark J. 2015. Quantifying fibrosis in head and neck cancer treatment: an overview. *Head and Neck*. 37(8):1225–1231.